



General

The Dallas key reader kit is used to make it possible for a LUBE-Master keypad to read a Dallas key also called Dallas iButton®.

The iButton® (also known as the Dallas Key) is a mechanical packaging standard that places a 1-Wire component inside a small stainless steel "button" similar to a disk-shaped battery. iButtons are connected to 1-Wire bus systems by means of sockets with contacts which touch the "lid" and "base" of the canister. The connection can be fleeting, comparable to a thumb being scanned by a fingerprint reader.

TECHNICAL SPECIFICATIONS

Connectors:	1 x 2-pin connector 1 x 16-pin connector
Other:	Reads the fixed serial number of a Dallas key (iButton®)
Mounting:	Chassis, Ø9,5mm hole

NOTE!

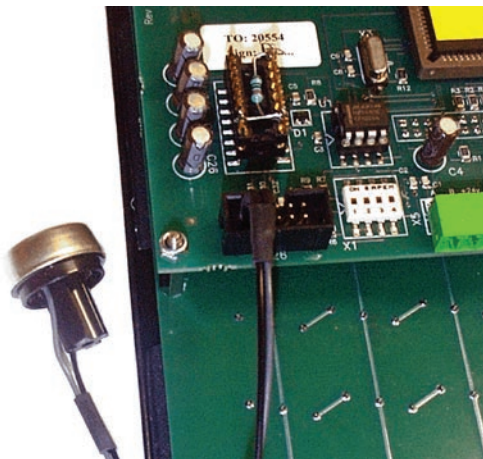
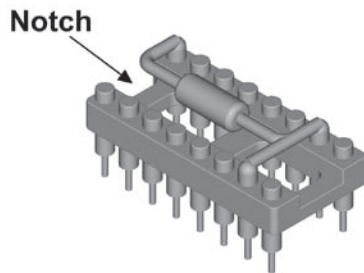
The Dallas key reader requires a Keypad software version of at least KP10010RC12!

If this is not done, open the LUBE-Master CD that came with the PC Software & Interface, locate the folder "EXTRA", then "Beta" then "BetaAll". When the latest BetaAll files have been installed the keypads can be flashed with the latest software.

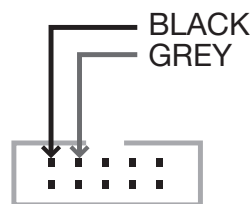
DALLAS KEY READER

PART NO 53419

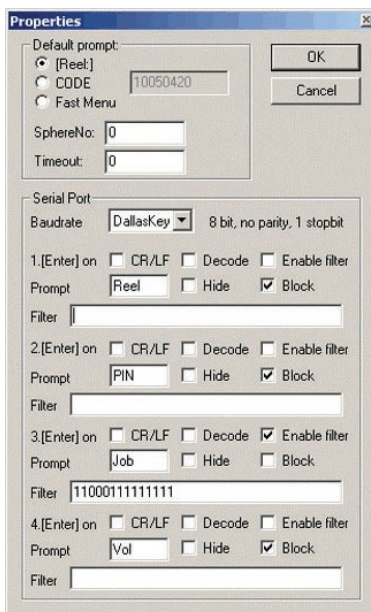
MECHANICAL INSTALLATION



1. First disconnect the keypad from the LUBE-Master system. Make sure that the keypad is not powered.
2. Insert the 16-pin adapter into the 16-pin socket on the PCB of the keypad. Make sure that the adapter is oriented correctly and that all pegs are aligned before pressing it in place. The correct orientation is notch against notch.
3. Drill a $\varnothing 9.5$ mm hole at a convenient location on the keypad. Insert the reader probe into the hole. From the inside first add the plastic washer and then press the lock washer in place.
4. Attach the 2-pole connector of the probe to the keyed 10-pole connector on the PCB of the keypad. Make sure that it is connected to the correct pins and that the colours are correct (Black/Grey)



CONFIGURATION



Enabling the Dallas key reader for the keypad must be done from a PC running LUBE-Master WinTools. To do this, select the Dallas Reader from the “Baudrate” selector in Keypad properties.

Below is a sample for using the 9 last digits of the fixed serial number of a key as Job number input.

After changing to “Dallas reader” reboot keypad. This is done either by quickly (less than 3 seconds) press the Reset button or by power-down / power-up the keypad.